

ZBC64 SERIES

Bathroom Lock 2.5" - 57MM C/C



ZBC64RPCB



ZBC64RPVD



ZBC64PS



ZBC64RSS



ZBC64AB

TECHNICAL SPECIFICATION

PRODUCT FEATURES

- 57.0mm centres
- 44.5mm backset
- 102.0mm lockcase height
- 65.5mm lockcase depth
- **Performance Testing:** Successfully tested in accordance with the requirements of BS EN12209: 2003

Classification:

NPD	A	7	1	O	NPD	-	NPD	O	NPD	O
-----	---	---	---	---	-----	---	-----	---	-----	---

FIRE TESTING

- Successfully fire tested in accordance with the requirements of BS EN1634-1, suitable for use on 30 and 60 minute timber fire doors

CERTIFICATION

- UKCA marked (Certificate AG8016)
- CE marked (Certificate AG7931)



1121-CPR-UK-AG8016



2812-CPR-AG7931

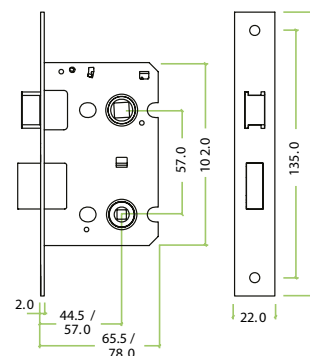
FOREND OPTIONS




- Square
- Radius

FINISHES

- Satin Stainless (SS)
- PVD Brass (PVD)
- Polished Stainless (PS)
- Powder Coated Black (PCB)
- Antique Brass (AB)

TECHNICAL



CODE	DESCRIPTION	FINISH
ZBC64SS / RSS	Bathroom Lock 2.5" - 57mm c/c - Square / Radius	Satin Stainless
ZBC64PVD / RPVD	Bathroom Lock 2.5" - 57mm c/c - Square / Radius	PVD Brass
ZBC64PS	Bathroom Lock 2.5" - 57mm c/c - Square	Polished Stainless
ZBC64PCB / RPCB	Bathroom Lock 2.5" - 57mm c/c - Square / Radius	Powder Coated Black
ZBC64AB	Bathroom Lock 2.5" - 57mm c/c - Square	Antique Brass
	For more information please contact us today: ERA Home Security T/A Zoo Hardware, Unit B, Dukes Drive, Kingmoor Park North, Carlisle, Cumbria CA6 4SH Call: 01228 672900 Fax: 01228 672928 Email: sales@zoo-hardware.co.uk Web: www.zoohardware.co.uk	 
		FM 668401 EMS 668402