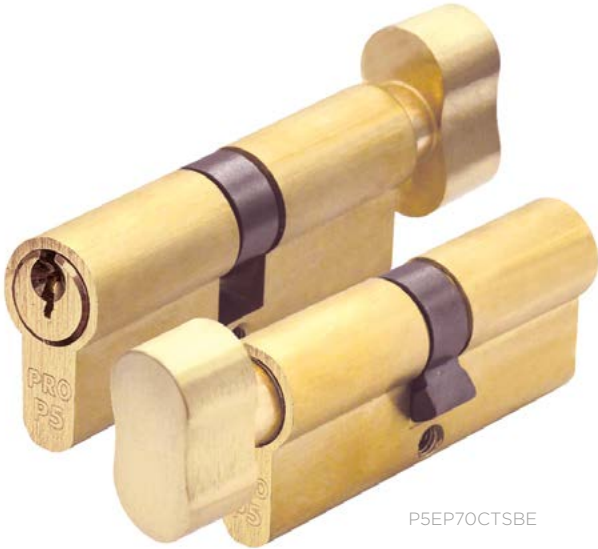


P5 SERIES

5-Pin Contract Cylinder



P5EP70CTSBE



P5EP45SNPE



P5EP70DSBE



P5EP70CTPNE

TECHNICAL SPECIFICATION

PRODUCT FEATURES

- **Profile:** Euro profile
- **Body material:** Brass
- **Available as:** Keyed To Differ (KTD)
- **Suitability:** Interior & exterior doors
- **Guarantee:** 5 Year Mechanical Guarantee
- **Keys:** Supplied with 3 brass keys

PRODUCT VARIATIONS

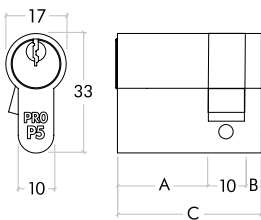
- Euro single cylinder
- Euro double cylinder
- Euro cylinder and turn

FINISHES

- Nickel Plate (NP)
- Satin Brass (SB)

PACKAGING

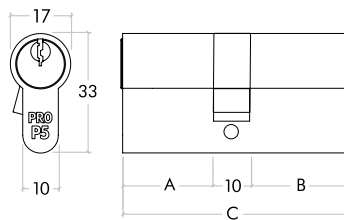
- 1 cylinder per box
- 10 per inner box
- 60 per outer carton



P5 EURO SINGLE CYLINDERS

A = Barrel size
B = 5mm
C = Total length

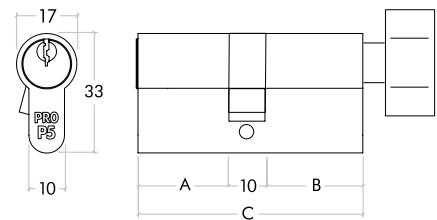
Barrel size starts from 25mm



P5 EURO DOUBLE CYLINDERS

A,B = Barrel size
C = Total length



Barrel size starts from 25mm



P5 EURO CYLINDER & TURN

A,B = Barrel size
C = Total length

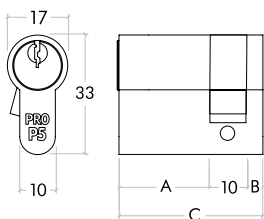
Barrel size starts from 25mm

CODE	DESCRIPTION	FINISH
P5-NP	5-Pin Euro Profile Cylinders	Nickel Plate (NP)
P5-SB	5-Pin Euro Profile Cylinders	Satin Brass (SB)
 <p>For more information please contact us today: ERA Home Security T/A Zoo Hardware, Unit B, Dukes Drive, Kingmoor Park North, Carlisle, Cumbria CA6 4SH Call: 01228 672900 Fax: 01228 672928 Email: sales@zoo-hardware.co.uk Web: www.zoohardware.co.uk</p>		 <p>FM 668401 EMS 668402</p>

P5 SERIES

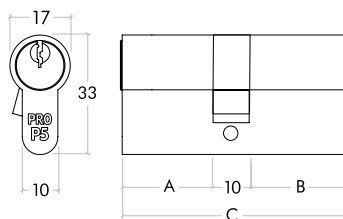
5-Pin Contract Cylinder

PRODUCT CODES	DESCRIPTION	5-PIN	10-PIN RESTRICTED	A - MM	B - MM	C - MM	OFFSET	ADJUSTABLE CAM	ANTI-DRILL	ANTI-PICK	BREAK-OFF SYSTEM	FIRE DOOR TESTED	INNER BOX QTY	OUTER BOX QTY	AVAILABLE FINISHES								
															PB	PC	SC	BK	BZ	NP	SB		
P5EP40S	P5 Euro Single Cylinder 40mm	•		30	5	45							10	60							•		
P5EP45S	P5 Euro Single Cylinder 45mm	•		25	5	40							10	60								•	
P5EP60D	P5 Euro Double Cylinder 60mm	•		25	25	60							10	60								•	
P5EP70D	P5 Euro Double Cylinder 70mm	•		30	30	70							10	60								•	•
P5EP80D	P5 Euro Double Cylinder 80mm	•		35	35	80							10	60								•	•
P5EP90D	P5 Euro Double Cylinder 90mm	•		40	40	90							10	60								•	•
P5EP100D	P5 Euro Double Cylinder 100mm	•		45	45	100							10	60								•	
P5EP3035D	P5 Euro Double Cylinder 30/35mm	•		25	30	65	•						10	60								•	
P5EP3040D	P5 Euro Double Cylinder 30/40mm	•		25	35	70	•						10	60								•	•
P5EP3540D	P5 Euro Double Cylinder 35/40mm	•		30	35	75	•						10	60								•	
P5EP3545D	P5 Euro Double Cylinder 35/45mm	•		30	40	80	•						10	60								•	•
P5EP3550D	P5 Euro Double Cylinder 35/50mm	•		30	45	85	•						10	60								•	
P5EP3555D	P5 Euro Double Cylinder 35/55mm	•		30	50	90	•						10	60								•	
P5EP4045D	P5 Euro Double Cylinder 40/45mm	•		35	40	85	•						10	60								•	
P5EP4050D	P5 Euro Double Cylinder 40/50mm	•		35	45	90	•						10	60								•	
P5EP4055D	P5 Euro Double Cylinder 40/55mm	•		35	50	95	•						10	60								•	
P5EP4060D	P5 Euro Double Cylinder 40/60mm	•		35	55	100	•						10	60								•	
P5EP4550D	P5 Euro Double Cylinder 45/50mm	•		40	45	95	•						10	60								•	
P5EP4555D	P5 Euro Double Cylinder 45/55mm	•		40	50	100	•						10	60								•	
P5EP60CT	P5 Euro Cylinder and Turn 60mm	•		25	25	60							10	60								•	
P5EP70CT	P5 Euro Cylinder and Turn 70mm	•		30	30	70							10	60								•	•
P5EP80CT	P5 Euro Cylinder and Turn 80mm	•		35	35	80							10	60								•	•
P5EP90CT	P5 Euro Cylinder and Turn 90mm	•		40	40	90							10	60								•	•
P5EP100CT	P5 Euro Cylinder and Turn 100mm	•		45	45	100							10	60								•	•



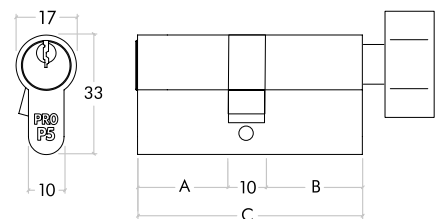
P5 EURO SINGLE CYLINDERS

A = Barrel size
B = 5mm
C = Total length
Barrel size starts from 25mm



P5 EURO DOUBLE CYLINDERS

A,B = Barrel size
C = Total length
Barrel size starts from 25mm



P5 EURO CYLINDER & TURN

A,B = Barrel size
C = Total length
Barrel size starts from 25mm