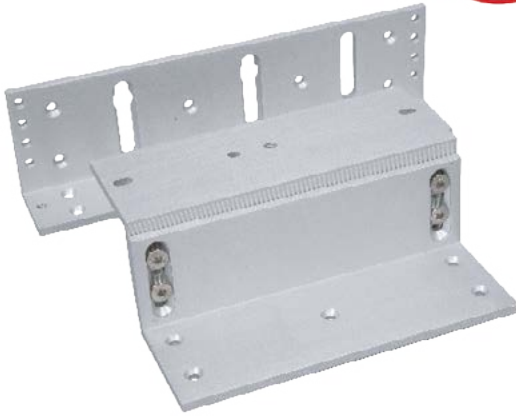


## ZL BRACKETS FOR STANDARD MAGNET (1200LB)

**FIRE TESTED** to  
BSEN1634-1-2014 & BS476:Part22:1987  
(30, 60, 90 & 120 min timber door-sets)



**BK1200ZL**



**BK1200L**

Fire tested range of maglocks and brackets from a market leader in access control.

SPECIFICATION	FEATURES	OTHER PRODUCTS
<p>BK1200ZL</p> <ul style="list-style-type: none"> <li>Adjustable Z&amp;L brackets</li> <li>For use with the ML1200 range of products</li> </ul> <p>Product now has added slots to improve and simplify the installation process, whilst enhancing the safety features of the product.</p> <ul style="list-style-type: none"> <li>Has 4 points of secure fixing</li> <li>Magnet can now be slid into bracket to free up both hands to secure lock and bracket</li> </ul> <p>Z bracket can extend by an additional 20mm to allow for door variations.</p>	<p>BK1200ZL</p> <ul style="list-style-type: none"> <li>Z&amp;L brackets</li> </ul> <p>BK1200L</p> <ul style="list-style-type: none"> <li>L bracket</li> </ul> <p>Alternative Brackets/Housings:</p> <ul style="list-style-type: none"> <li>BK1200-F-L/AB (Architectural F/ZL)</li> <li>ADJ1200-L (Highly adjustable L)</li> <li>AH1200 (Required for Fire Doors)</li> </ul>	<p><b>T202SM-I</b></p> <p><b>KPX1000</b></p>
<p><b>DIMENSIONS</b></p> <p>BK1200ZL</p> <ul style="list-style-type: none"> <li>Z: 266 (mm) · L: 185 (mm)</li> <li>1.26kg (Boxed) · 1.12kg (Unboxed)</li> </ul> <p>BK1200L</p> <ul style="list-style-type: none"> <li>185 (mm)</li> <li>524g (Boxed) · 426g (Unboxed)</li> </ul>	<p><b>CONTENTS</b></p> <p>BK1200ZL</p> <ul style="list-style-type: none"> <li>2 x Brackets to make up Z</li> <li>1 x L Adjustable bracket</li> <li>1 x Fixing kit</li> </ul> <p>BK1200L</p> <ul style="list-style-type: none"> <li>1 x L Adjustable bracket</li> <li>1 x Fixing kit</li> </ul>	<p><b>ML600</b></p> <p><b>DU-GB/PTE</b></p>