

TECHNICAL SPECIFICATION SHEET

ZCS41 / 41EP / 41OP / 42 / 43

CODE	FINISH
ZCS41SS	SATIN STAINLESS
ZCS41PS	POLISHED STAINLESS
ZCS41EPSS	SATIN STAINLESS
ZCS41EPPS	POLISHED STAINLESS
ZCS41OPSS	SATIN STAINLESS
ZCS41OPPS	POLISHED STAINLESS
ZCS42SS	SATIN STAINLESS
ZCS42PS	POLISHED STAINLESS
ZCS43SS	SATIN STAINLESS
ZCS43PS	POLISHED STAINLESS
ZCS41EPSS72	SATIN STAINLESS
ZCS43SS78	SATIN STAINLESS

SPECIFICATIONS

- Cover Plate dimensions 180mm x 45mm
- Grade 304 stainless steel
- Push on stainless steel outer cover (click fast)
- To suit ZCSIP19SP



ZCS41SS

ZCS41EPSS

ZCS41OPSS

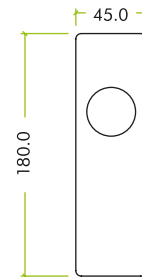
STANDARDS



SUITABLE



TECHNICAL



CODE	DESCRIPTION	FINISH	ADDITIONAL INFO.
ZCS41	Standard profile lock cover plate	SS / PS	To suit ZCSIP19SP lever
ZCS41EP	Euro profile lock cover plate	SS / PS	To suit ZCSIP19SP lever
ZCS41OP	Oval profile lock cover plate	SS / PS	To suit ZCSIP19SP lever
ZCS42	Latch cover plate	SS / PS	To suit ZCSIP19SP lever
ZCS43	Bathroom lock cover plate	SS / PS	To suit ZCSIP19SP lever
ZCS41EP72	Euro profile lock cover plate - 72mm c/c	SS	To suit ZCSIP19SP lever
ZCS4378	Bathroom lock cover plate - 78mm c/c	SS	To suit ZCSIP19SP lever

For more information please contact us today:

Call: 01228 672900

Fax: 01228 672928

Email: sales@zoo-hardware.co.uk

Web: www.zoohardware.co.uk

ZOO Hardware Ltd, Unit B, Dukes Drive
Kingmoor Park North, Carlisle, Cumbria CA6 4SH